



GOLDEN SECTION PYRAMID

30 years of research and experiments have allowed a group of scientist to determine specific shape, size, and material of a pyramid, with which the pyramid's influence on the surrounding environment is most beneficial and harmonious.

Such pyramid was named The Golden Section Pyramid. The golden section is one of the main principles in architecture, painting, and science. Masterpieces of architecture and art, the Nature itself and the pinnacle of its creation - human being, are created by this exact proportion. For the past 30 years more than 150 Golden Section Pyramids have been built around the world.

The highest pyramid of 44 meters was built in 1999 (see photo). The process of preparation of the area for pyramid construction took more than 5 years. The Pyramid is made of non-conductive materials without a single metal element.



SCIENCE & TECHNOLOGY

Years of research and more than 1000 experiments inside golden section pyramids have shown limitless possibilities of using these pyramids for environmental protection, development of new technologies and human health improvement. Only a few of the vast variety of unique tests and experiments conducted are outlined below. Among them, special attention should be paid to the pyramidal phenomenon of “non-freezing water”.

A radar shows a huge ionic column reaching a few kilometres into the sky above The 44-meter Golden Section Pyramid.

With the help of a series of radars working in the centimetre range and placed at 60 km, 32 km and 30 km from the Pyramid, scientists conducted radiolocation of the area of vertical axis of the Pyramid. During this research, the existence of an ionic column with a height of 2000 meters and width of 500 meters along the vertical axis of the pyramid was established. This allegedly ionic column was constantly changing its height from 800 meters to 2000 meters. The reflecting ability of this formation is comparable to reflecting ability of a plane.

Moreover, a circle with a diameter of 300 km, with a higher degree of ionization and a center within the zone of the Pyramid was discovered with a significant degree of authenticity.

It is possible to hypothesize about existence of a vortical radiation in the zone of the Pyramid with a diameter of hundreds of kilometres. Registered ionization is the effect of this radiation. Discovered ionic column above the Pyramid outlines the neck of the funnel of this vortex.

Even at -40°C regular water does not freeze inside the Pyramid.

Several plastic bottles with regular water were placed inside the Pyramid and their state was observed within a period of 3 winter months. The water was not freezing and had all the properties of a liquid during this whole period. The lowest air temperature inside the Pyramid was -40°C . Measuring water temperature inside the bottles showed that it was the same as the temperature of the air (i.e. the water was not freezing even when its temperature was -40°C).

However, it was noted during this research, that if a bottle of this water was shaken or hit, a crystallization process was beginning inside and the water was turning into ice within 3-20 seconds (depending on the degree of water super cooling).

Pyramid has powerful protective characteristics against lightning bolt hits (see below)

Electro technical institute The institute conducted research on effects of the Pyramid field on electrical field in a long air space AXIS-PLANE under impulse voltage of positive polarity 250/2500 mcs.

As a base system the researchers used air space AXIS-PLANE with distance between electrodes of $S=5.0\text{ m}$.

As a test system they used the same thing, but the PLANE had 7 pieces of granite 100 grams each, which were previously placed inside the pyramid. Granite pieces were placed on the PLANE in a circle with a diameter of 1 meter and with a center placed 0.5 meters away from the center of the PLANE.

Each system was subjected to 100 impulses. Researchers were registering trajectory of discharges and points of hits of the plane. Based on the results fields of hit points were generated. Discharge voltage during the research was approximately 1400 kV.

Test results showed that the number of hit points in the base system was 5 times higher than that in the test system.

Therefore, a contour of granite stones exposed to the pyramid energy has powerful protective characteristics against lightning bolt hits within the area of the contour.

Golden Section Pyramid harmonizes space within its radius of influence (see below)

New streams appeared in the area of the 22-meter pyramid on the Seliger Lake, a stork set up a nest, and nearby fields became covered with previously extinct kinds of flowers.

Many substances and materials change their physical and chemical properties.

“Graphite” institute was determining the influence of the Pyramid field on the electrical resistance of carbon-based materials. Research object – pyrolytic carbon. Measurements were conducted by the 4-probe method with direct current. Sizes of carbon plates were $\sim 25\times 10\times 1\text{ mm}$, distance between potential contacts $\sim 3\text{ mm}$. Density of the measuring current was $\sim 1500\text{ mA/cm}^2$. Before the plates were placed inside the pyramids, electrical resistance was $\sim 5\text{-}7\text{ m}\Omega/\text{m}^2$. After 1 day inside the pyramid, electrical resistance had doubled. Such measurements are anomalous for pyrolytic carbon. Even the neutron radiation does not yield a resistance change of more than 5%.

Qualitative structure of oil changes.

A complex of pyramids was installed on an oil field. Within the next few days the viscosity of oil decreased by 30%, which correspondingly led to the increased oil production. Gradually, the structure of oil began to change, i.e. amounts of tars, paraffin, etc in oil decreased. Fractional structure of oil has shifted towards the light fractions (Moscow Academy of Oil and Gas).

Burning of any substance inside the Pyramid Of The Golden Section produces pleasant aromas.

Increase in crop productivity.

Before planting the crops, their seeds were placed inside the Pyramid for 1-5 days. Tens of thousands of hectares were seeded with more than 20 crops. In each case crop productivity was from 20% to 100%, the crops were not sick, were not bothered by droughts. Quantity of toxic substances in plants decreased. Similar results were obtained when closed contours of stones, previously exposed to the Pyramid energy, were placed around the crop fields. 500 small stones with total weight of 20 kg were placed around a 10 ha field.

Medical research and experiments.

Research, experiments and tests in medical laboratories and science centers have confirmed that Golden Section Pyramids: - neutralize geopathic zones (see next section) - have powerful anti stress effects - slow aging processes by enhancing immune system - increase vitality of cellular tissue, slow development of negative processes in living organisms - reduce negative influence of the environment on humans and nature

PYRAMID WATER

What is Pyramid Water?

Water, as any other natural formation, has a certain crystalline structure, which largely defines its properties and qualities. Pyramid water is water, which changes its structure under the influence of pyramid energy. Water is the only natural substance, which can be found in nature in all three states – solid, liquid and gaseous. Among all the substances on Earth, water, thanks to its unique physical and chemical properties, plays an exceptionally significant role in human life. Covering $\frac{3}{4}$ th of the planet, water is the cradle of life on Earth.

Advantages of Pyramid Water

- Pyramid Water has the same properties as ice
- high surface tension
- high electric potential

Water in our organism

Our organism consists mostly of water. At birth we are 95% water; during our lives this share decreases, and by the old age it comes down to 60%. During our lives it is necessary to maintain water levels in our organism at around 70% - 75%. Water level in the organism is the indicator of aging. Water balance is the indicator of relative health condition of our body. These two important indicators are determined by the structure of water. There are many natural water sources in the world. Having studied the structure of water from these sources and observing thousands of people remarkably long lives in various countries, scientists-gerontologists from USA, Japan, Sweden came to a conclusion, that the ideal water structure for a healthy organism is water with the structure of ice. Under the influence of the pyramid energy water acquires that structure, while not freezing even at -40°C .

How pyramid water influences our organism

Working on principle of bioresonance on a subtle energy level (similar to homeopathy), when taken either internally or externally, pyramid water harmonizes (regulates) all the processes in our organism. And the effect begins exactly in the location where it is needed the most. Such water is extremely rich with oxygen and negatively charged ions, which makes it easy to assimilate.

Various advantages of pyramid water:

- increases water concentration in cells
- assists in removal of toxins and “cleaning” of organism
- rejuvenates skin
- increases vitality
- speeds up healing processes and rehabilitation of organism
- strengthens immune system
- anti-stress effects
- healing without interference with organism (self-healing)
- helps heal skin, digestive disorders

Recommended for internal and external use.

HOW TO MAKE PYRAMID WATER

Using pyramid matrix

- Attach pyramid matrix (two halves) on the outside of a glass; or
- Fill glass with water, either tap or bottled. Keep the water in the glass for 1,5 hours (for tap water) or 1 hour (for bottled water)

Using mini-pyramid

- Place a bottle of water (1,5 –2 liters) under mini-pyramid
- Time of treatment – at least 3 hours; best time is during the night for 6-8 hours



Pyramid water applications

Internal applications

- Drinking – at least one glass a day on an empty stomach, maximum – no limits
- Gargling
- Preparation of tea, coffee, various beverages and dishes

External applications

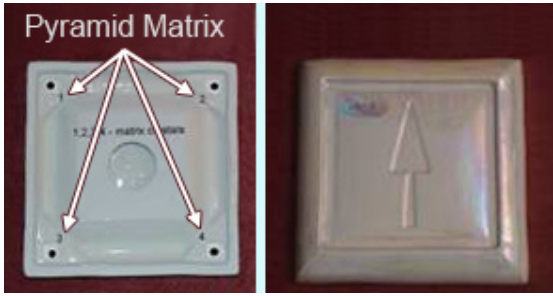
- Washing
- Compresses
- Swab

MINI-PYRAMID



What is a mini-pyramid

Miniaturized copy of The Great Pyramid. 2 matrices (4 crystal), placed within the base of a mini-pyramid, a charged with the energy of the Great Pyramid according to the ABO technology (see photo). There are two relative zones of pyramid influence: the active zone and the secondary zone. The active zone is above and below the pyramid. The radius of the secondary zone (harmonizing zone) is no less than 25 meters (see picture)



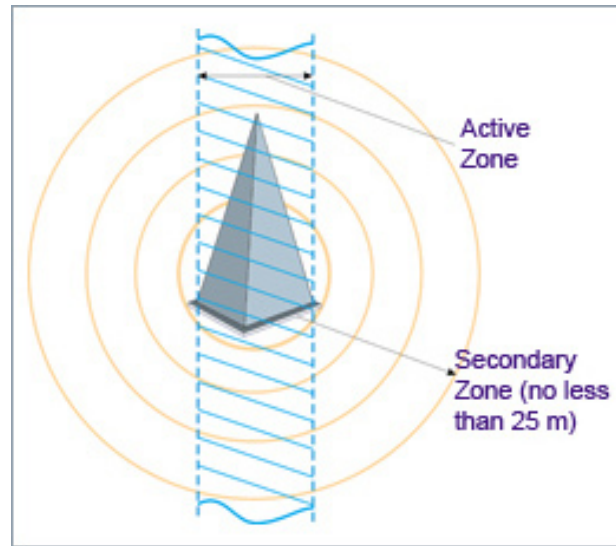
How to properly install a mini-pyramid:

Mini-pyramid's base placed with the arrow pointing North (see photo) Space around and above the pyramid within 40 cm (16") must be empty; especially important is the absence of any metal. Pyramid must be placed in a dry spot. Treatment within a mini-pyramid is not recommended, because it essentially does not differ from treatment above or under pyramid, but can shorten working

life of a mini-pyramid. Working life of a mini pyramid is lifetime.

Mini-pyramid Active Zones

- Harmonizes space within its 25-meter radius
- Neutralizes geopathic zones (see link)
- Neutralizes effects of electromagnetic radiation from various devices (computers, cell phones, microwaves, etc.)
- Has powerful anti-stress effects
- Optimizes immune system
- Slows process of aging
- Assists meditation
- Heals without direct interference with organism
- Any food products, beverages, clothing, cosmetics, domestic chemicals and others can be treated within the active zone of a mini-pyramid for neutralization of any negative effects on human organism



Not recommended:

- Using metal objects (e.g. metal plates, dishes) during treatment in the active zone of a mini-pyramid
- Treating more than 3 different kinds of products (e.g. oranges and pepper)
- Placing cosmetics within 50-60 cm from mini-pyramid
- Placing mini-pyramid close to sources of intense heat (oven, iron, etc.)

PYRAMID MATRIX



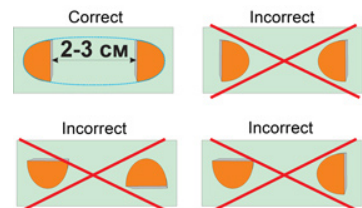
What is a pyramid matrix

Two halves of a crystalline substance undergo a cycle of phase transitions (crystallizes) inside the Great Pyramid. During this process matrix crystals get "charged" with the energy of the Great Pyramid.

Matrix position

How pyramid matrix works

Effective zone of a Pyramid Matrix equals the distance between two halves of the matrix. The working position of the halves is



when they form an elongated oval (see pic.). The shorter the distance, the more intense the effect of the matrix.

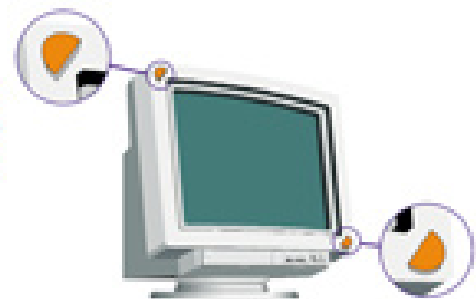
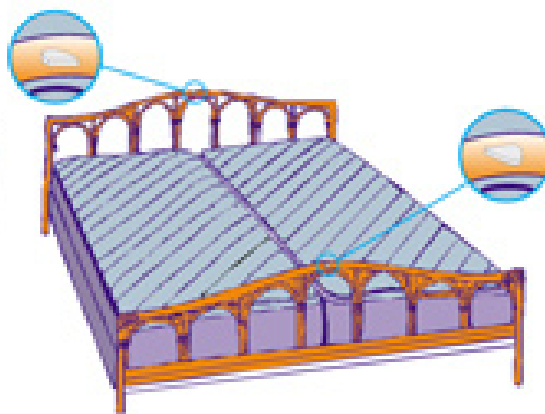
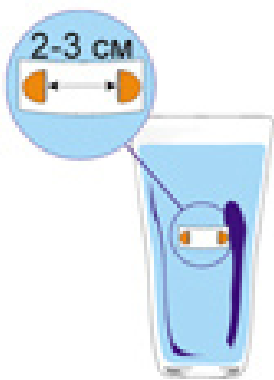
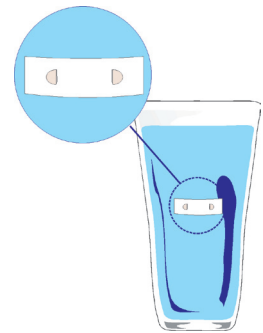
How a matrix affects a living organism

- Under the influence of matrix crystals organism begins reconstructing itself, its functions are restored, including those on a cellular level. This process is especially active during the first 4-5 days, as the research shows. During this period it is recommended to be active, in order to stimulate metabolism.
- Pyramid matrix should be placed on a body as close as possible to a place of pathology (pain). Distance between crystals should 1.5-3 cm.
- In order to place matrix on a body it is convenient to use a band-aid. How long the matrix stays on a body should be determined individually. It is recommended to start with a 2-hour period.
- Resource of a matrix placed on a human body is approximately 8-12 weeks (depending on person's condition and pathology), in other cases up to 6-8 months.

Matrix use

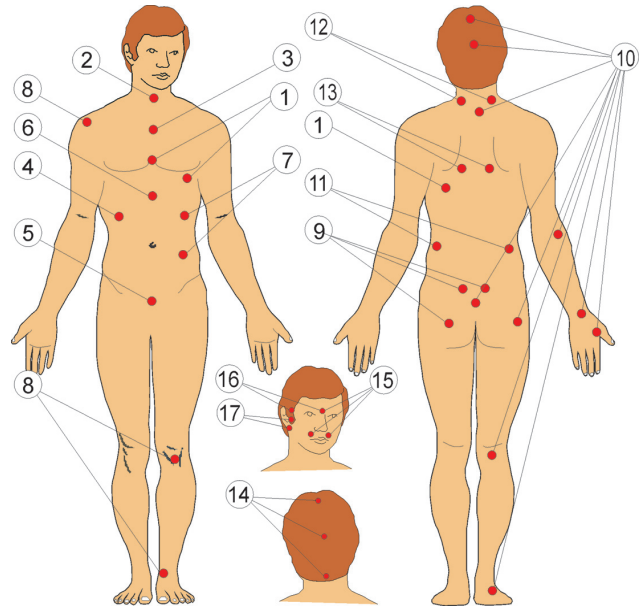
How pyramid matrix can help

- Water or beverage in a glass with a matrix (distance between crystals is 1.5-3 cm) attached for 1.5 hours acquire healing qualities (see Pyramid Water section).
- To harmonize a room, to neutralize a geopathic zone one half of a matrix can be placed on a headboard of a bed, and the other on a footboard. Alternatively they can be placed in opposite corners of a room.
- For protection against radiations of computers, cell phones, microwave ovens, matrix halves should be attached to the frames of the devices with a maximum distance between the halves (See pictures).



Healing places on a human body (See chart)

1. Cardiovascular system
2. Thyroid gland
3. Asthma, bronchitis
4. Liver and gallbladder
5. Urinary system, reduced potency
6. Chronic fatigue syndrome, gastrointestinal track
7. Pancreas, colon
8. Arthritis & arthrosis
9. Osteochondrosis of spine and lower back
10. Condition following brain stroke
11. Kidneys
12. Osteochondrosis of the neck
13. Osteochondrosis of the spine chest area
14. Post-traumatic head problems and disorder
15. Sinusitis, rhinitis
16. Headaches
17. Pain in the ear area



CRYSTAL PYRAMID



What is a crystal pyramid?

Miniaturized copy of the Great Pyramid, precisely following the golden section proportions. Crystal glass, from which this pyramid is made, is essentially a matrix. Crystal pyramid is “charged” with the energy of the Great Pyramid according to the ABO technology. Crystal pyramid harmonizes space within a 3-meter radius.

Crystal Pyramid:

- Harmonizes space within 3 meters
- Neutralizes geopathic zones (see “Geopathic Zones” section for details)
- Neutralizes effects of electromagnetic radiation from various devices (computers, cell phones, microwaves, etc.)
- Has powerful anti stress effects
- Optimizes immune system
- Slows process of aging
- Assists meditation
- Heals without direct interference with organism

How to install crystal pyramid correctly

Crystal pyramid should be placed in any convenient area, where you spend at least an hour a day (see drawing).

